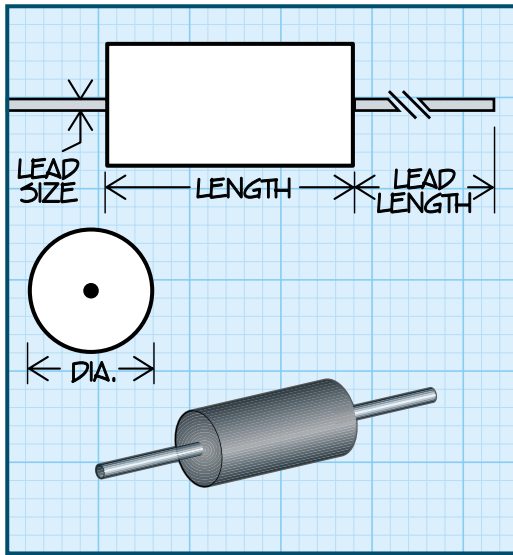


Series 4211R 4211



Traditional First Quality

Axial Leaded Filter Bead



Impedance measured at indicated frequencies, utilizing an HP 4191A at 25°C

Lead Material capable of meeting MIL-STD-202, Method 208 solderability requirements

Marking Individual part marking is not available

Packaging Tape & reel: 14" reel. Series 4211-1 to 4211-8 and 4211-12 to 4211-30, 4000 pieces max. Series 4211-9 to 4211-11, 1000 pieces max. 12" reel not available

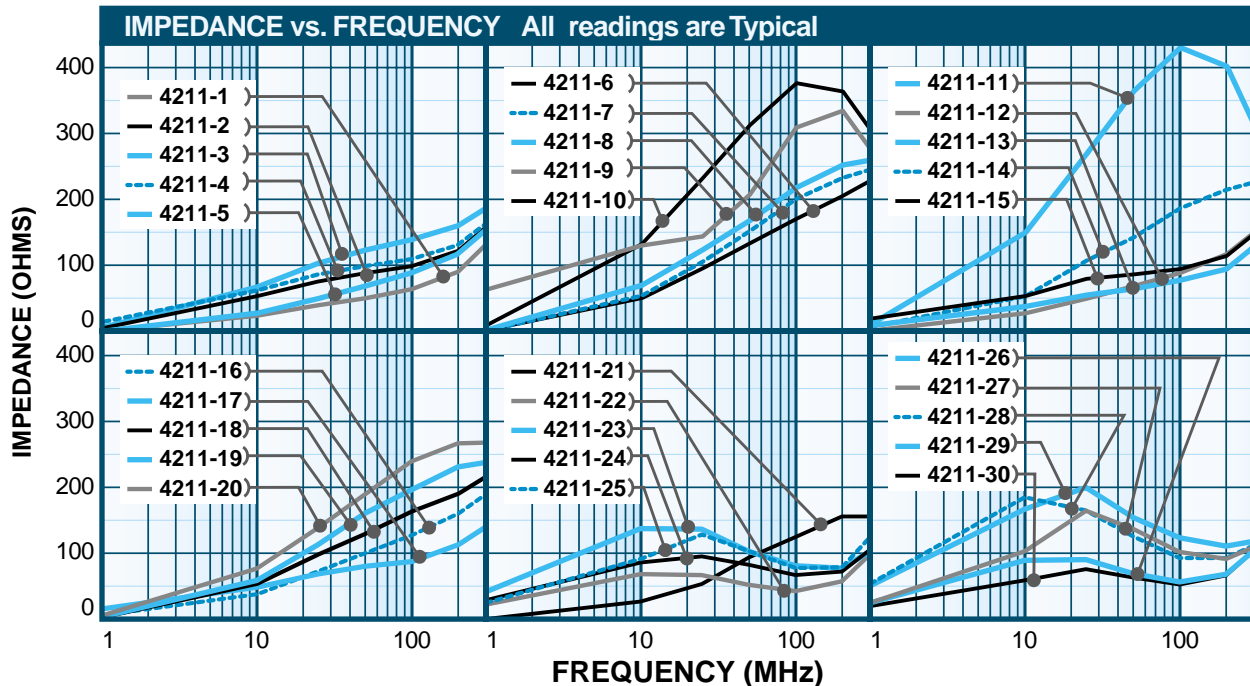
DIMENSIONS (Inches)
DASH NUMBER*
DIAMETER ±.010
LEAD SIZE ±.002
LENGTH
TOLERANCE
10 MHz
25 MHz
100 MHz
250 MHz

FERRITE CORE							
-1	0.138	0.025	0.175	±.010		≥ 39	54 - 82
-2	0.138	0.025	0.350	±.020		≥ 70	106 - 160
-3	0.138	0.025	0.263	±.010		≥ 52	80 - 120
-4	0.138	0.025	0.300	±.020		≥ 60	88 - 132
-5	0.138	0.025	0.236	±.010		≥ 48	72 - 109
-6	0.138	0.025	0.375	±.010		≥ 77	120 - 180
-7	0.138	0.025	0.450	±.015		≥ 93	144 - 216
-8	0.138	0.025	0.545	±.025		≥ 114	176 - 264
-9	0.385	0.032	0.450	±.015		≥ 154	216 - 325
-10	0.385	0.032	0.550	±.020		≥ 188	264 - 397
-11	0.385	0.032	0.650	±.020		≥ 224	312 - 469
-12	0.138	0.025	0.206	±.010		≥ 43	66 - 98
-13	0.138	0.025	0.175	±.010			50 min. 72 - 108
-14	0.138	0.025	0.350	±.020			105 min. 134 - 202
-15	0.138	0.025	0.263	±.010			78 min. 100 - 150
-16	0.138	0.025	0.300	±.020			90 min. 115 - 173
-17	0.138	0.025	0.236	±.010			70 min. 90 - 136
-18	0.138	0.025	0.375	±.010			112 min. 144 - 216
-19	0.138	0.025	0.450	±.015			135 min. 170 - 255
-20	0.138	0.025	0.545	±.025			163 min. 206 - 310
-21	0.138	0.025	0.206	±.010			61 min. 80 - 120
-22	0.138	0.025	0.175	±.010	≥38	49-73	
-23	0.138	0.025	0.350	±.020	≥75	92-138	
-24	0.138	0.025	0.263	±.010	≥56	69-103	
-25	0.138	0.025	0.300	±.020	≥64	79-118	
-26	0.138	0.025	0.236	±.010	≥50	62-93	
-27	0.138	0.025	0.375	±.025	≥88	108-162	
-28	0.138	0.025	0.450	±.015	≥100	124-187	
-29	0.138	0.025	0.545	±.025	≥121	152-228	
-30	0.138	0.025	0.206	±.010	≥44	54-82	

*Complete part # must include series # PLUS the dash #
For further surface finish information, refer to TECHNICAL section of this catalog.

Lead Length 1 Inch min.

SUPPRESSORS



For more detailed graphs, contact factory